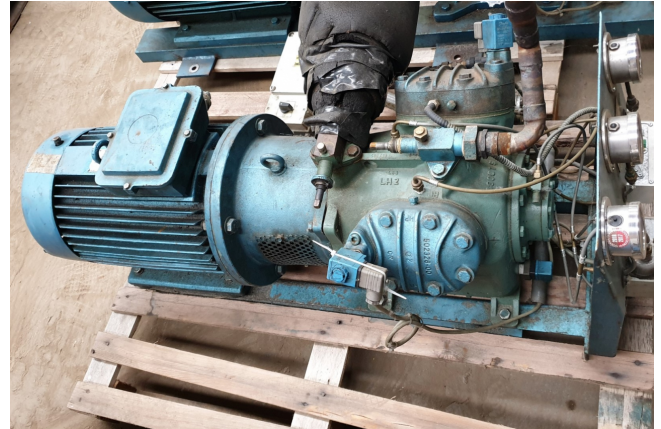


Bitzer 4P.2

Specifications

Merk	Bitzer
Type	4P.2
Koudemiddel	Freon
kW at 0°C/+40°C	39,6
kW at -5°C/+40°C	33,0
kW at -10°C/+40°C	27,3
kW at -20°C/+40°C	18,0
kW at -30°C/+40°C	11,2
kW at -40°C/+40°C	6,27
kW at -45°C/+40°C	4,39
Elektromotor Specs	Rotor 50 Hz - 15/20 kW - 1445 RPM
Onbelaste aanloop	✓
Capaciteits Controle	✓
Op stalen frame	✓
Druk veiligheids schakelaars	✓
Manometers	✓
Olie level systeem AC&R	✓
m3 / h	47,14
Afmetingen	1250x480x550 mm
Stock	1



Description

Used Bitzer 4P.2

Gebruikte Bitzer 4P.2 open type zuigercompressor direct aangedreven door Rotor elektromotor 50 Hz - 15/20 kW - 1445 RPM.

